

TRANSTHYRETIN (ATTR) AMYLOIDOSIS

ATTR AFFECTS

HEREDITARY ATTR
AMYLOIDOSIS

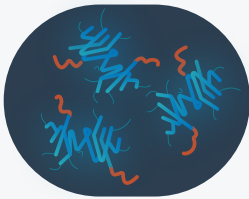
50K
patients worldwide

WILD-TYPE ATTR
AMYLOIDOSIS

200K - 500K
patients worldwide

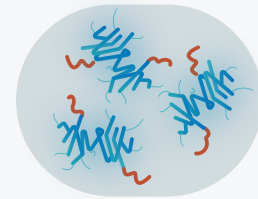
WHAT CAUSES ATTR AMYLOIDOSIS?

CAUSED BY
INHERITED MUTATION



PRODUCTION OF
MISFOLDED TTR DUE TO
GENETIC MUTATION

ARISES
SPONTANEOUSLY



PRODUCTION OF NORMAL
TTR WHICH CHANGE
SHAPE AS PATIENT AGES

LIVER
PRIMARY SOURCE
OF TTR PROTEIN
PRODUCTION

LEADS TO **DEPOSITS OF MISFOLDED TTR PROTEIN** THROUGHOUT THE BODY

RESULTING IN **DIVERSE COMPLICATIONS**, OFTEN FATAL, INCLUDING:



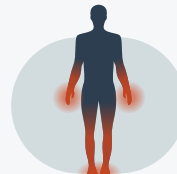
AUTONOMIC NEUROPATHY

Light-headedness when standing, bladder and bowel problems, sexual dysfunction



GASTROINTESTINAL

Stomach pain, decreased appetite, diarrhea, nausea, weight loss



PERIPHERAL NEUROPATHY (OR POLYNEUROPATHY)

Difficulty walking, tingling and numbness in the hands and feet, limb weakness and pain



CARDIOMYOPATHY

Shortness of breath, chest pain, palpitations and abnormal heart rhythm, ankle swelling, fainting