

HEREDITARY ANGIOEDEMA (HAE)

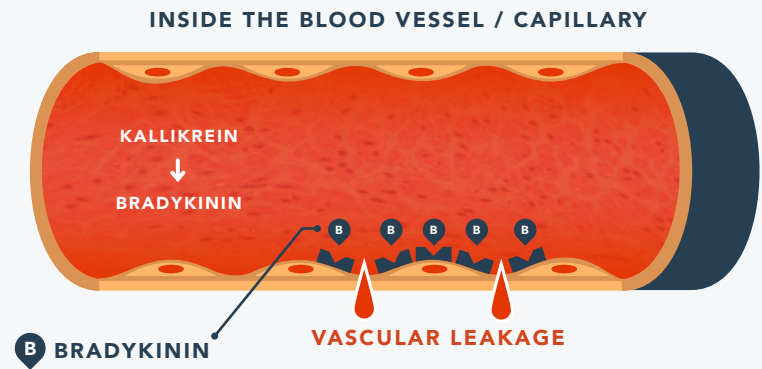
HAE AFFECTS

1 in 50,000
people worldwide

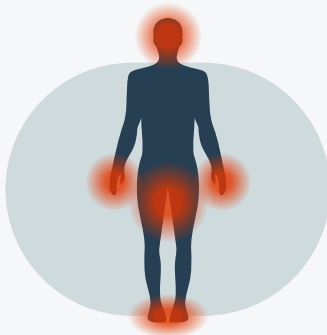
~7,000
people in the U.S.

WHAT CAUSES HAE?

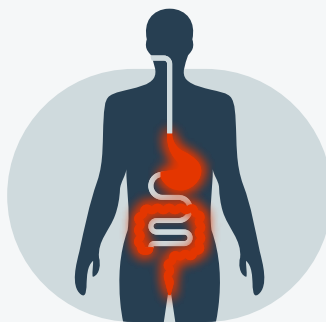
HAE is caused by mutations in a gene that codes for a key regulator of a pathway that influences blood vessel permeability. These mutations lead to too much of a protein called bradykinin, which drives excessive vascular leakage.



SYMPTOMS MAY INCLUDE:



**SWELLING IN
EXTREMITIES**



**STOMACH AND
GASTROINTESTINAL
TRACT SWELLING**



THROAT SWELLING